

SILVER LININGS



LIVING *This page and opposite* A few tweaks to this heritage home in Sydney morphed into a full-blown renovation, with interior designer Joanna Lennox at the helm. The large living area is a cocooning space with its walls painted Dulux Loveday and generous custom sofa by H+J Furniture. &Tradition Formakami 'JH5' pendant light and Shuffle table, both Cult Design. Mohana coffee table, Space. Katong rug, Tribe Home. AFFI floor lamp, About Space. Otomi wall hangings made in Mexico. Cushions, Walter G. Antique mirror. Normann Copenhagen 'Shorebird' ornament, Designstuff. Trivet sculpture, HK Living.

When a small cosmetic update revealed a serious structural issue, the owners of this Sydney home went all-in with a renovation designed to make their house feel like new.

STORY Carli Philips | STYLING Joanna Lennox Interiors | PHOTOGRAPHY Pablo Veiga

KITCHEN Cool grey Dekton Bergen from Cosentino tops the central island and pairs beautifully with the cabinetry by 7-3 Design & Joinery, which is finished in Dulux Dieskau Half with niches in stained walnut. White Radiance splashback tiles, Surface Gallery. Filigrana Ellipse pendant lights, Living Edge. Piper bar chairs, DesignByThem. Appliances by Neff. Sculptures on benchtop by Tracey Lamb (black) and Natalie Rosin (white), Curatorial+Co. Tulip vase, Amara.

When the owners of this heritage home on Sydney's Lower North Shore first approached interior designer Ioanna Lennox, their brief was relatively small and uncomplicated: update the kitchen and design a new laundry/powder room on the ground floor.

However, when the powder room's ceiling was opened up, a huge leak became apparent and a structural beam was found to have completely corroded. "It seems the waterproofing in the main bathroom above hadn't been done properly," says the owner. "There was extensive water damage and the beam could have given way at any moment," says Ioanna. With that beam and the water damage needing urgent attention, the scope of works spiralled.

Happily, the owners embraced the change of plans. "We figured that while we were at it, we may as well make the whole place feel fresher," they say. "We had planned to do up the bedrooms and upstairs bathrooms at a later stage anyway, and renovating all at once was a great decision in the end."

Once the waterproofing was sorted, Ioanna was ready to take the reins. Pictures of a hotel by UK designer Kit Kemp led the design direction. "Taking their style cues from her, the owners wanted an eclectic mix of classical elements," says Ioanna. "An abundance of colour, pattern and texture that would produce a wonderful, joyous and carefree feeling, but leaning more towards Mid-century Modern overall rather than traditional styling." ▶



Paint colours are reproduced as accurately as possible in printing processes. Allow

THE PALETTE

Dulux Loveday (living room)

Dulux Dieskau Half (kitchen joinery)

Dulux Casper White Half (main interior walls and trims)

THIS IS THE LIFE

"We loved our home's high ceilings and original Federation features," say the owners. "Ioanna retained those, plus weaved in elements of Scandi, boho and Mid-century design and really turbo-charged its personality. All of the new art and furnishings, and some of our original furniture and art has brought it all together. We love everything about it!"



"THE CHALLENGE WAS TO BRING IN ELEMENTS OF MID-CENTURY STYLE AND HAVE THEM SIT IN HARMONY WITH HERITAGE FEATURES." *Ioanna Lennox, interior designer*

On the ground floor, the kitchen island was reoriented to sit parallel to the dining table and is topped with hard-wearing Dekton. Since the laundry facilities were to be combined with the powder room, the original laundry was converted into a butler's pantry with Shaker-style joinery that extends through to the kitchen proper. A small table at the pivot point between kitchen and dining area doubles as an office nook when required. "Redesigning the kitchen was a game-changer - it's so much more spacious and just a lovely place to spend time now," says the owner.

A little-used bedroom to the left of the entry hall was repurposed as a cosy study/library with the addition of decorative plasterwork and a gas fireplace. "The owners both worked from home during lockdowns, either on the dining table or from the bedroom, neither of which is ideal," says Ioanna. "I wanted to give them dedicated workspaces that didn't scream 'office'. The idea was that they could work by the fire in here in winter and in the back room in summer."

The existing living room, located between the new study and revamped kitchen, was an "uninspiring space that lacked energy", says the owner. The floor plan here could not be altered, so Ioanna focused on making the space feel as intimate as possible. The walls here are painted Dulux Loveday, a striking steely blue - the contrast with the crisp white elsewhere in the house was the first step in marking this room as a place of pause. Brightly coloured and intricately detailed Otomi embroidered fabrics from Mexico, framed as artworks, also beckon, inviting visitors to linger and explore the details. "I wanted the living area to be a room that held and cocooned you, where you could hang out," she says. "It connected the heritage part of the house to the remodelled rear so it was always going to be a transitional area, but the generous sofa and furniture arrangement help you forget it's essentially a thoroughfare."

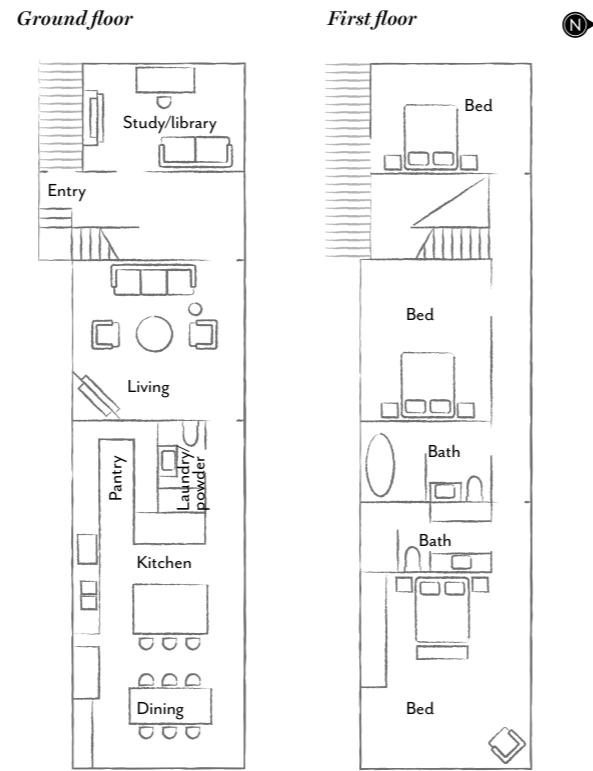
Upstairs, the main bedroom was rejuvenated with a coat of bright white paint, built-in wardrobes, new carpet and soft furnishings - relatively small changes that made a surprisingly dramatic difference. ▶

ARTWORKS *Left to right, top to bottom* Flower painting by owner's mother; small landscape, artist unknown; linocut by Banduk Marika; *Waratah* by Bruce Gool; *Turtle & Fish* by Banduk Marika; *Tree of Life* Chinese papercut from Hardwick & Cesko; small landscape, artist unknown; Chinese papercut; gold-framed work, artist unknown; Flower painting by owner's mother; small landscape, artist unknown; Aboriginal artwork by Rosie Nanyuma Napurrula; *Kites in the Wind* Chinese papercut; Aboriginal artwork by Sarah Leo for Warlukurlangu; Aboriginal artwork by unknown artist for Warlukurlangu. **KITCHEN** Stained-walnut drawers provide ample storage. *Lord of the Fishes* sculpture by Humble Matter, Curatorial+Co. **DINING** *Opposite* Ethnicraft 'Bok' dining table, GlobeWest. Wishbone chairs, Cult Design. Waldorf double pendant light, Living Edge.





THE LAYOUT



Having had their waterproofing repaired, the main bathroom and main bedroom's ensuite got fresh new looks. Both are smartly decked out in monochrome, with white walls, black tapware and black-framed mirrors, paired with oak and terrazzo in the main bathroom. Also in the main bathroom, the layout was zoned into 'wet' (walk-in shower and bath) and 'dry' (toilet and vanity) areas. "It's much more functional and feels a lot bigger," says Ioanna.

The owners say the end result is everything they could have hoped for. "We're very happy indeed."
Ioanna Lennox Interiors, Alexandria, NSW; (02) 8033 3120 or ioannalennox.com. Neesom Property Group, Wattle Grove, NSW; @neesom_property_group.

MAIN BEDROOM Top and opposite Martyn Slipper chair, Cafe Lighting & Living. Art print by Charles Blackman. Custom bed, Zenn Design. Bedlinen, I Love Linen and L&M Home. Bolster in Graffiti fabric by Kelly Wearstler, available from Elliott Clarke. Addi table lamps, About Space. Custom bench covered in Olive Velvet from Unique Fabrics. Artworks by Ingrid Daniell, Curatorial+Co. **MAIN BATHROOM** Bjorn arch mirror, Life Interiors. Eveleigh White wall tiles, Surface Gallery. Issy Halo vanity, Reece. Vivid Slimline tapware, Phoenix Tapware. Caterpillar wall lights, About Space. Sculpture by Kristiina Engelin, Curatorial+Co.



"IN THE MAIN BEDROOM, TEXTURED FABRICS AND ART ARE SET AGAINST A CALMING WHITE BACKGROUND." *Ioanna Lennox*

MAIN BATHROOM Ancient Steps print, Warranbrooke. Italian terrazzo tiles, Surface Gallery. Bath, The Blue Space. Akono stool/side table, Uniqwa Collections. Caterpillar wall lights, About Space.



“THE BATHROOM OFFERS BOTH A SENSE OF SANCTUARY AND TIMELESSNESS.”

Ioanna Lennox



1

THE SOURCE

Teaming clean-lined pieces with more ornate elements invites visitors to pause to enjoy the unexpected details.



Produced by Shayne Burton.

1 Carl Hansen & Søn 'CH24 Wishbone' chair by Han Wegner, from \$1172, Cult Design. 2 Cordelia wall mirror, \$1075, Temple & Webster. 3 &Tradition 'Formakami JH5' pendant light, \$523, Cult Design. 4 Dama coffee table, POA, Poliform. 5 1082 terrazzo surface, POA, Signorino. 6 Australian House & Garden 'Esperance' platter, \$59.95, Myer. 7 Brooklyn Sand vase, \$199, Domayne. 8 Caroma 'Contura' freestanding bath, \$4205, Harvey Norman. 9 Thermorail vertical heated towel rail, \$429, The Build by Temple & Webster. 10 Piper bar chair, \$520, DesignByThem. For Where to Buy, see page 188. H&G